



Pre-Treatment Estimates Q&A

What is a Pre-Treatment Estimate?

To help members understand costs before they're incurred, Delta Dental provides free pre-treatment estimates. These estimates give patients an approximate idea of how much a dental treatment will cost overall, and how that cost will be split between the member and Delta Dental. Getting a pre-treatment estimate is easy.

When is a Pre-Treatment Estimate recommended?

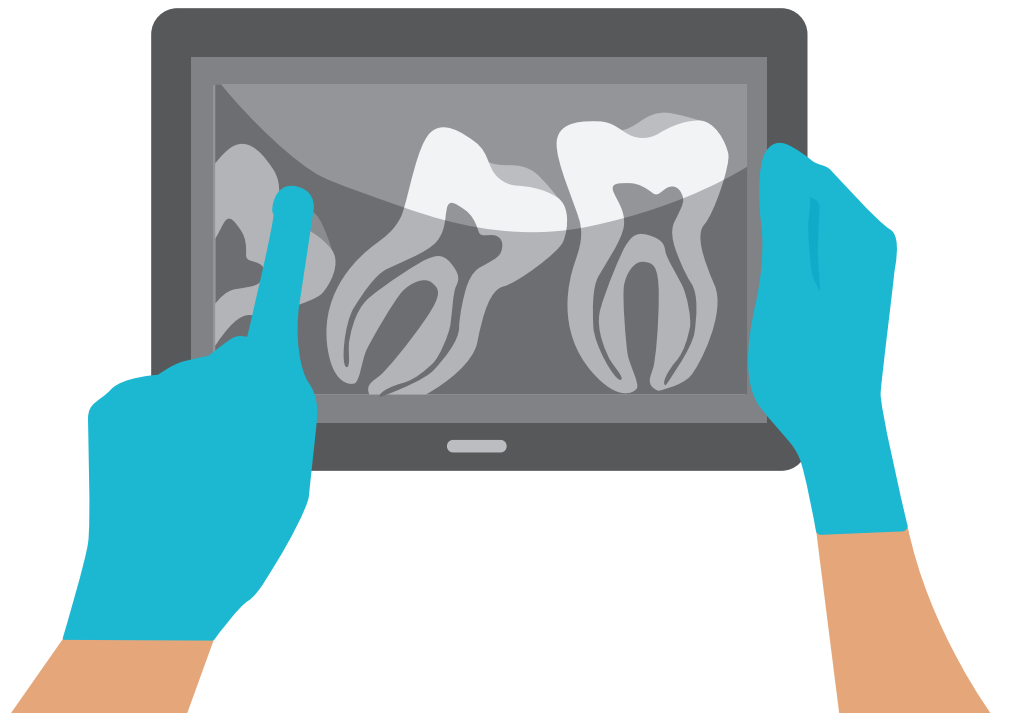
Estimates are most typically requested for costly procedures such as crowns, wisdom tooth extractions, bridges, dentures and oral surgery.

How do I obtain a Pre-Treatment Estimate?

The first step is to have your dentist submit a proposed treatment plan. We will review these documents and your specific benefits plan, then respond to you and your dentist with a treatment cost estimate.

The estimate is based on the type of plan you have, your eligibility, your current plan benefits, and the amount remaining in your annual maximum. Estimates are usually returned in a matter of days, but more complex treatments can take longer to assess.

Don't wonder - ask your dentist to request a Pre-Treatment Estimate!



The Power of Smile™
Learn more about how your oral health connects to your overall health at:
DeltaDentalNE.org